

Paris-Saclay, 2-4 June, 2025

AFSE Annual Congress

73rd Congress of the French Economic Association

<https://afse2025.sciencesconf.org/>



Welcome Guide and Detailed Programme

Centre for Economics at Paris Saclay
 ENS Paris-Saclay — 4 avenue des Sciences — 91190 Gif-sur-Yvette

The organizers gratefully acknowledge the generous support of Paris-Saclay Applied Economics (PSAE), the [Graduate School of Economics & Management](#) at Université Paris-Saclay, the University of Evry Paris-Saclay, and the Maison des Sciences de l'Homme ([MSH](#)) Paris-Saclay.

They also express their gratitude to the Department of Humanities and Social Sciences, the Heritage administration and DSI administration of ENS Paris-Saclay, CEPS PhD students (at ENS Paris-Saclay and University of Evry Paris-Saclay) and administrative officers (Solange Soubrier, Stéphanie Nowak and Pauline Promeneur) for their substantial material and logistical assistance in bringing this meeting together.

Here is a comprehensive overview of the AFSE Annual Congress:

- **Three Keynote speakers**
- The AFSE annual **plenary meeting** and **AFSE awards**
- Parallel Sessions: **Nine series with 8 sessions each**. Access the detailed program using QR codes provided at the venue.
- **PhD students Poster sessions** organized at lunch time.
- **Eight** lunch time session dedicated to the discipline.
- **Three social events:**
 - Monday Evening: **Cocktail Reception** at the Lumen.
 - The traditional **AFSE Banquet**: it will take place Tuesday evening at the Château de Breteuil.
 - **Farewell Reception**: Hosted in the garden on Wednesday, **accompanied by a theater play at the Scène de Recherche**.
- Enjoy the garden for the **coffee and lunch**, provided on-site for the three days.

For a detailed **3-day programme overview** of the 2025 AFSE Annual Congress, [click here](#).

Read [here](#) about the venue: **Getting around ENS Paris-Saclay**.

Commitment to sustainability, equity and inclusion. The organizers aim for the 2025 AFSE Congress to be an enriching and intellectually challenging experience **for all** participants:

The use of trains, public transport, and sustainable transportation solutions are strongly encourage. Printed programs will not be available. Please use the provided QR code for access.



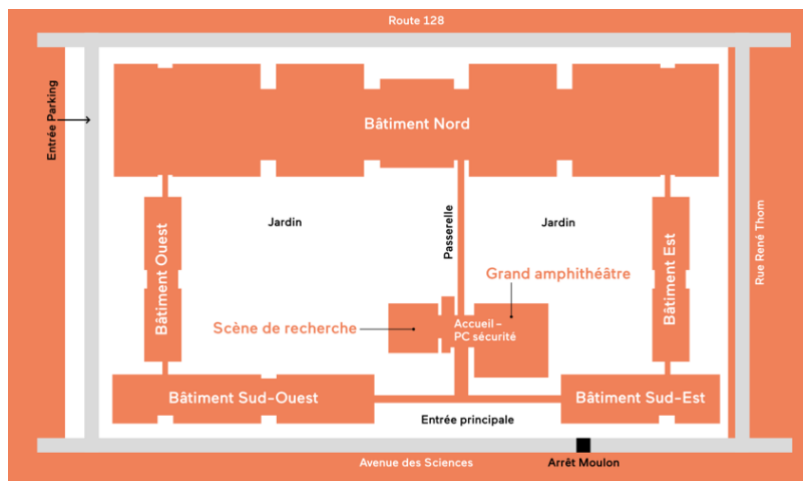
We are dedicated to creating a **harassment-free and inclusive conference environment**. **Everyone**, regardless of gender, gender identity and expression, age, sexual orientation, disability, physical appearance, ethnicity, religion, or status, **should feel comfortable at all times**, both during the conference and social events.

If you encounter any issues, **please do not hesitate to contact the ENS Paris-Saclay representative** (Claire Lambard, *chargée de mission égalité*, [mission.egalite\[at\]ens-paris-saclay.fr](mailto:mission.egalite[at]ens-paris-saclay.fr)).

Venues: Getting around at ENS Paris-Saclay

Centre for Economics at Paris Saclay

ENS Paris-Saclay — 4 avenue des Sciences — 91190 Gif-sur-Yvette



The conference takes place in 3 buildings: **South-West** (*bâtiment Sud-Ouest*), **West** (*bâtiment Ouest*), and **North** (*bâtiment Nord*), and in the **garden**.

Registration for the conference is located at the entrance hall (*Accueil PC sécurité*, at the *Entrée Principale*).

Let's meet every morning for a **welcome coffee** in the **garden** (Monday at 8.30am, and at 9am on Tuesday and Wednesday).

The **welcome and opening words**, **keynote lectures**, the **AFSE General Meeting** and the **PhD awards** takes place on the first floor in the *Grand Amphithéâtre (Alain Aspect)*. It is accessible from the registration area via the stairs (please note that there is an intermediate floor between the **ground** and **first floors**).

Parallel sessions are located on:

- **Building South-West** on the **first floor** (rooms 1B10, 1B14, 1B18, 1B26, 1B36, 1E26), the **second floor** (room 2E29).
- **Building West** on the **first floor** (room 1O07).

Lunch sessions and roundtables take place in:

- The *Grand Amphithéâtre (Alain Aspect)*, 1st floor)
- The *Amphithéâtre Dorothy Hodgkin*, located on the ground floor of **Building West**. It is accessible either from the **garden** or via the stairs in **Building West** from the **first floor**.
- Room 1B26 and 1B36 on the **first floor** of the **Building South-West**.

Lunch will be served in *Hall Emmy Noether* alongside the **PhD poster sessions**, located on the **ground floor** of **Building North**:

- It is accessible from the parallel session rooms via the stairs down, then by crossing the **garden**, or through the *passerelle* on the **first floor** that connects to **Building North**, followed by stairs down.
- The entrance is from the **garden**, in the middle of **Building North**.

Enjoy your lunch while discussing the posters in *Hall Emmy Noether* or in the large **garden** space.

Coffee breaks are located along in the **garden**, and in case of bad weather condition in *Hall Emmy Noether*.

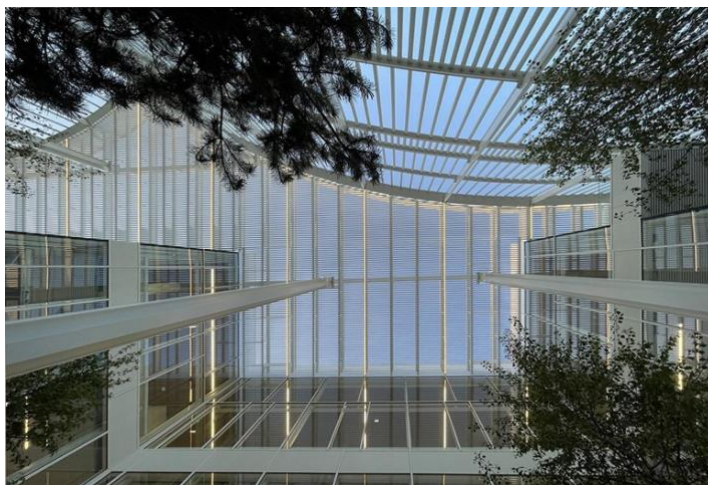
Some free rooms are available to relaxation and work on the **first floor** of **Building West** (rooms 1M07, 1Q07) and **Building South-West** (rooms 1E12, 1E14, 1E18). A storage room for luggage is available on request.

The **Farewell Reception** will also take place in the **garden**, accompanied by an artistic performance from the **Scène de Recherche**.

Venues: Getting around at ENS Paris-Saclay

Centre for Economics at Paris Saclay — ENS Paris-Saclay
 4 avenue des Sciences — 91190 Gif-sur-Yvette

Offsite: Cocktail Reception — Monday, June 2nd — 6pm



© Emmanuelle et Laurent Beaudouin

The cocktail reception will be held on the ground level the **Lumen**, located at the centre of the Paris-Saclay campus.

Getting to Lumen from the conference is very easy: it's a 5 minute walk down the same street as the main AFSE Congress venue at ENS Paris-Saclay.

Read more about the Lumen and how getting to the Cocktail Reception on the [2025 AFSE Annual Congress website](#).

Offsite: AFSE Banquet — Tuesday, June 3rd — 7pm to 10.30pm



© Isabelle Boitet (photononstop)

Château de Breteuil
 78460 Choisel

Departure will be by bus in front of the main entrance of ENS Paris-Saclay at 6:40pm.

Read more about getting to the AFSE Banquet on the [2025 AFSE Annual Congress website](#).

Farewell Reception — Wednesday, June 4th — 6pm to 8.30 pm



© Michel Denancé (RPWB)

In the garden accompanied by an artistic performance presented by the **Scène de Recherche**.

The performance is titled: *Nos Préférences*.

Read more about getting to the Farewell Reception and the Scène de Recherche AFSE Banquet on the [2025 AFSE Annual Congress website](#).

Guideline for speakers



© Michel Denancé (RPWB)

Unless otherwise indicated (e.g., sessions organised with partner associations), the chair of a parallel session is the final speaker scheduled for the session.

Feel free to adjust the order of presentations if the final speaker has time constraints. Additionally, a local PhD student will be available to assist with any technical issues you may encounter.

Preparing your presentation

Each conference room is equipped with a standard audio-visual setup, allowing you to include slides in your presentation if desired.

- Please prepare your presentation as a pdf file to avoid potential compatibility problems.
- Arrive at your session meeting room **at least 5 minutes before the start** to upload your PDF presentation and familiarize yourself with the presentation setup, including the computer, microphone, and other equipment.
- All presentations must be conducted in English.

Timing

- The chairperson will manage the timing of each session.
- Parallel sessions last for 1 hour and 30 minutes and include three presentations.
- If the session includes 3 papers, each presentation is **limited to 30 minutes** (including questions and discussion). If there are 2 papers, you may exceed the 30 minutes guideline.

Keynote Speakers

Manisha Saha (UC Berkeley) — Inaugural Lecture : Monday, June 2nd

Unmasking the Global Epidemic: Understanding Violence Against Women and Shaping Change Through Policy

Abstract: Intimate partner violence (IPV) generates significant private and social costs, yet remains understudied in economics, both theoretically and empirically. This talk examines the growing body of evidence on policy levers aimed at reducing IPV in low- and middle-income countries (LMICs), including cash transfer programs, economic empowerment initiatives, and reforms to laws and social norms. I then present results from a randomized controlled trial (RCT) conducted in sub-Saharan Africa, where adolescent IPV rates are among the highest globally. The RCT evaluates two interventions: a goal-setting exercise to influence girls' sexual and reproductive health (SRH) behavior, and a male-focused soccer program that integrates SRH and anti-violence messaging. Both treatments significantly reduce IPV. The soccer intervention improves young men's attitudes toward violence and risky sexual behaviors. The goal-setting treatment increases girls' agency, leading to exits from violent relationships. These findings highlight distinct but complementary behavioral pathways through which gender-targeted interventions can reduce IPV.



Manisha Shah is a development economist and [Chancellor's Professor](#) at the [University of California, Berkeley](#). Manisha works in low and middle income settings to better understand which policies and interventions increase human capital investment in children and adolescents. She has also written several papers on the economics of sex markets in order to learn how more effective policies and programs can be deployed to slow the spread of HIV/AIDS and other sexually transmitted infections. Her research affiliations include [NBER](#), [BREAD](#), [CEGA](#), and [IZA](#). She is an editor at [Journal of Health Economics](#), an Associate Editor at [The Review of Economics and Statistics](#), and serves on the Editorial Board for the [American Economic Review](#).

[Learn more about Manisha Shah and her work on her homepage.](#)

Keynote Speakers

Anne Perrot (General Inspection of Finance) — Presidential Lecture: Tuesday, June 3rd

Public Policy Towards the Digital Sector and the Media

Abstract: For a long time, the digital sector was governed solely by the case-by-case decisions of the competition authorities. The need for a priori sector-specific regulation arose from the excessive length of procedures compared to the time taken by the market.

The media have suffered from the behaviour of consumers, platforms and advertisers alike. The loss of revenue threatens their survival. A number of public policies need to be put in place to preserve this component of democratic life. These policies have to be consistent with the economic incentives.



Anne joined the [Inspection Générale des Finances](#), a service of the Ministry of Economy and Finance, in September 2018. She is a member of the [Council of Economic Analysis](#) since 2015. She was a partner at MAPP, an economic consultancy from 2012 to 2018. She was previously the Vice President of the [French Competition Authority](#) (2004-2012). She belonged to several public think tanks on competition policy, such as the [Economic Advisory Group on Competition Policy](#) (before the European Commission) or the "group of experts" of the [French energy regulator](#) (CRE). She also was a member of several commissions appointed by the French government on subjects such as telecoms deregulation. Anne is a Professor of Economics at [University of Paris I Panthéon-Sorbonne](#) and [ENSAE](#). She also taught at the Paris School of Economics and the Brussels School of Competition. She earned a Ph. D in Mathematics from the University Paris VI and a Ph. D in Economics from the University of Paris I.

Keynote Speakers

Alexander Teytelboym (University of Oxford) — Jean-Jacques Laffont Lecture: Wednesday, June 4th

Duality in Market Design

Abstract: There are many settings in market design involving allocation of indivisible goods including auctions, trading networks, and pseudomarkets. One of the main concerns in such markets is the existence of market-clearing prices. In this lecture, I will take steps towards a unified analysis of equilibrium in different markets with indivisible goods. I will describe economically interpretable conditions for equilibrium existence as well as surprising dualities between different markets.

Alex's keynote will be based on his [ERC-funded research agenda on duality in market design](#).

Alex is a [Professor of Economics](#) at the [Department of Economics, University of Oxford](#), a [Tutorial Fellow](#) at [St. Catherine's College](#), a [Senior Research Fellow](#) at the [Institute for New Economic Thinking at the Oxford Martin School](#), and a Research Affiliate at CEPR (IO Programme).



His research interests lie mainly in market design and the economics of networks. In 2023 he gave the Paul Kleindorfer Lecture at the Society for Economic Design and was an invited speaker at IJCAI. He is also co-founder of [Refugees.AI](#), an organisation that is developing new technology for refugee resettlement (originally funded by [Skoll Centre for Social Entrepreneurship](#)). This subsequent activity is connected to his academic research [on refugee resettlement](#).

[Learn more about Alex and his work on his homepage.](#)

3-Day Programme Overview

73rd AFSE Annual Congress – 3-Day Programme Overview									
June 2 - 4 Centre for Economics at Paris-Saclay, ENS Paris-Saclay, University Paris-Saclay									
Time	Monday, June 2nd			Tuesday, June 3rd			Wednesday, June 4th		
08:30	Welcome Coffee & Registration Garden			Welcome Coffee Garden			Welcome Coffee Garden		
09:00	9:15-9:30 Opening words: Philippe Malin (Vice President of ENS Paris-Saclay), Vincent Martinet (Deputy Director of the Graduate School of Economics & Management) <i>Applé, Alice Agot</i> 9:30-9:45 Inaugural Lecture Manisha Shah (UC Berkeley)			PARALLEL SESSIONS 4			PARALLEL SESSIONS 7		
10:00	Unlocking the Global Epidemic: Understanding Violence Against Women and Shaping Change Through Policy <i>Applé, Alice Agot</i>								
10:30	Coffee Break Garden						Coffee Break Garden		
11:00	PARALLEL SESSIONS 1			Coffee Break Garden			Coffee Break Garden		
11:30				AFSE Presidential Address Anne Perrot (Inspection Générale des Finances) Public Policy Towards the Digital Sector and the Media <i>Applé, Alice Agot</i>			PARALLEL SESSIONS 8		
12:00				AFSE General Meetings & Awards <i>Applé, Alice Agot</i>					
12:30	Lunch Break Hall Emmy Noether Groundfloor, entry from the garden			Lunch Break Hall Emmy Noether Groundfloor, entry from the garden			Lunch Break Hall Emmy Noether Groundfloor, entry from the garden		
13:00	12:45-13:00 Round Table Perspectives on Migration and Social Policy <i>Applé, Alice Agot</i>			12:45-13:00 Round Table Turbulence, Populism, Identity Politics and Polarization <i>Applé, David Higgins</i>			12:45-13:00 Round Table Women in Economics (WIEG) <i>Applé, Alice Agot</i>		
13:30	13:00-13:30 Round Table New Academic Job Market <i>Applé, David Higgins</i>			13:00-13:30 Training Session on STATA Timothy Leake, official distributor Room 1B16			13:00-13:30 Round Table Sexual and Gender-Based Violence in Academic Assessment and Perspectives <i>Applé, Alice Agot</i>		
14:00	PARALLEL SESSIONS 2			PARALLEL SESSIONS 5			PARALLEL SESSIONS 9		
14:30							Jean-Jacques Laforet Lecture Alexander Teyssie (University of Oxford) Duality in Market Design <i>Applé, Alice Agot</i>		
15:00							Coffee Break Garden		
15:30	Coffee Break Garden								
16:00	PARALLEL SESSIONS 3			PARALLEL SESSIONS 6					
16:30									
17:00									
17:30									
18:00							FAREWELL RECEPTION Garden		
18:30									
19:00	COCKTAIL RECEPTION LUMEN (free walk) 8 avenue des Sciences — 91190 Gif-sur-Yvette			AFSE BANQUET Ciboule & Bœuf 78660 Choleuil			FAREWELL RECEPTION Garden		
19:30				Departure by bus to/from the ENS Paris-Saclay			18:15-18:45 Theater Play Nos Préférences Garden		
20:00									
20:30									
21:00							End of Congress		

AFSE AWARDS

2025 AFSE PhD Prize Award

The 2025 AFSE PhD Prize has been awarded to Anaïs Fabre for her dissertation entitled *Essays on Higher Education Access and Econometrics*. Her research was conducted at the Toulouse School of Economics under the supervision of Thierry Magnac and Olivier de Groote, and was completed in June 2024.

Anaïs FABRE



Anaïs research work is related to labor economics and econometrics, with a particular focus on inequalities in access to higher education. She is currently a Postdoctoral fellow at the Institute for Fiscal Studies. In October 2025, Anaïs will join LMU Munich as an Assistant Professor of Economics.

Anaïs' PhD Dissertation Summary

Anaïs' PhD Dissertation aims both at broadening our understanding of the determinants of inequalities in access to higher education, and at expanding and deepening our understanding of available econometric tools. The Dissertation is structured in 4 chapters. Chapter 1 '*The Geography of Higher Education and Spatial Inequalities*' uses rich administrative data to document that the spatial distribution of higher education options is highly uneven in France, while students' demand for programs is elastic to their geographic proximity. Leveraging policy changes and a dynamic model linking equilibrium sorting on the higher education market and location choices of entry-level workers, the chapter shows that mitigating barriers to mobility would decrease regional gaps in educational attainment but could generate a long-lasting brain drain toward higher education hubs. Chapter 2, '*Opportunity Costs of Time and the Design of College Admission Mechanisms*', co-authored with Olivier De Groote, Margaux Luflade and Arnaud Maurel, documents how the design of college admission platforms impacts students' enrollment outcomes. The chapter evaluates the welfare and distributional effects of implementing sequential assignment procedures to match students to programs, which redistribute seats left vacant in the presence of higher education institutions operating off-platform. Chapter 3, '*Incomplete Information and the Complexity of Centralized College Application Processes*', studies information frictions in college admission procedures. Using data from the Chilean centralized admission mechanism, the chapter shows that the complexity of the application procedure negatively impacts students' admission outcomes, with disproportionately adverse effects on disadvantaged students. Finally, Chapter 4, '*Robustness of Two-Way Fixed Effects Estimators to Heterogeneous Treatment Effects*', deepens economists' understanding of the widely used Two-Way Fixed Effects (TWFE) estimator by providing necessary and sufficient conditions for this estimator to be robust to heterogeneous treatment effects.

Learn more about [Anaïs Fabre and her work on her homepage](#).

2025 AFSE PhD Prize - Special mentions

The very high quality of the submitted theses also led the jury to award two special mentions to Ségal Le Guern Herry and Duncan Webb.

Ségal LE GUERN HERRY



Ségal's PhD dissertation, entitled *Essays on Behavioral Responses to Taxation*, was completed at Sciences Po under the supervision of Gabriel Zucman and Jean-Marc Robin in June 2024.

Ségal was a Fulbright Visiting Scholar at UC Berkeley from August 2022 to March 2023. He is currently an Assistant Professor at the Aix-Marseille School of Economics and a Senior Economist at the EU Tax Observatory.

His research primarily focuses on how households respond to taxation and the implications of these responses for tax progressivity and inequality. His work is highly relevant for anyone interested in wealth taxation and tax evasion.

Ségal's PhD Dissertation Summary

Ségal Le Guern Herry's PhD dissertation brings new evidence to the debates on the desirability of higher taxes on the wealthy. Drawing on the increasing availability of detailed administrative data from several countries, the three chapters of his dissertation explore how taxpayers at the top of the income or wealth distribution adjust their investment strategies in response to changes in the tax environment.

The first chapter studies behavioral responses to wealth taxation using administrative data from France. In particular, Ségal shows that the 2017 abolition of the French wealth tax — and its replacement with a progressive tax on real estate — led French households to rebalance part of their real estate wealth toward financial assets. This response allows him to estimate the cross-elasticity between real estate and financial wealth, a key parameter for assessing whether it is desirable to tax real estate differently from other assets. The second chapter, coauthored with Jeanne Bomare, uses administrative data from the UK to analyze how tax evaders reacted to the introduction of cross-country information sharing on financial assets. The authors show that offshore investors exploited a loophole in the information exchange system, shifting investments into UK properties via tax havens to keep their wealth hidden. The third chapter, written with Annette Alstadsæter, Niels Johannesen, and Gabriel Zucman, estimates the degree of substitution between illegal tax evasion and legal tax avoidance using Norwegian administrative data. The findings suggest that when evasion is high, stricter tax enforcement can potentially raise more revenue than even large increases in nominal tax rates.

Learn more about [Ségal Le Guern Herry and his work on his homepage](#).

Duncan WEBB



Duncan's PhD dissertation, entitled *Essays in Development Economics*, was completed at the Paris School of Economics under the supervision of Karen Macours and Suanna Oh in June 2024.

Duncan is currently a postdoctoral researcher at Princeton University, and will join NovaSBE as an Assistant Professor in 2025. He spent the academic year 2022-2023 as a visiting scholar at MIT, and as a J-PAL Invited Researcher.

Duncan's main field of research is development economics, and he uses tools and insights from behavioral economics to focus on highly policy-relevant issues related to discrimination, social change, and human capital.

Duncan's PhD Dissertation Summary

Duncan's PhD dissertation studies how social interactions have impacts on economic outcomes for marginalized groups in emerging countries, and how inequalities in human capital can propagate and be addressed. The dissertation is structured in 3 chapters. The first, *Silence to Solidarity: Using Group Dynamics to Reduce Anti-Transgender Discrimination in India*, studies how discrimination is affected by communication about a marginalized minority. The second, *Menstrual Stigma, Hygiene, and Human Capital: Experimental Evidence from Madagascar*, joint with Karen Macours and Julieta Vera Rueda, studies how menstrual stigma can be addressed by amplifying the voice of those who are willing to speak out, and how hygiene-focused programs can generate human capital improvements in low-income schools. Finally, the third chapter, *Critical Periods in Cognitive and Socioemotional Development: Evidence from Weather Shocks in Indonesia*, studies how the timing of shocks in early childhood can have long-lasting consequences on the development of an individual's human capital.

Learn more about [Duncan Webb and his work on his homepage](#).

Programme: Monday, June 2nd

- 8:30 – 9:15 **Welcome Coffee & Registration**
Garden
- 9:15 – 9:30 Introduction: **Olivier Bos** (ENS Paris-Saclay, CEPS) & **Stefano Bosi** (University of Evry Paris-Saclay, CEPS)
Opening Words: Philippe Maitre (Vice-President of ENS Paris-Saclay), **Vincent Martinet** (Deputy Director of the Graduate School Economics & Management)
Amphi. Alain Aspect
- 9:30 – 10:30 **Inaugural Lecture**
Introduction: **Olivier Bos** (ENS Paris-Saclay, CEPS)
Manisha Shah (UC Berkeley)
Unmasking the Global Epidemic: Understanding Violence Against Women and Shaping Change Through Policy
Amphi. Alain Aspect
- 10:30 – 11:00 **Coffee Break**
Garden
- 11:00 – 12:30 **Parallel Sessions #1: 1A — 1H** (click for programme)
Buildings South-West & West, 1st and 2nd floor
- 12:30 – 14:30 **Lunch Break***
Building North — Hall Emmy Noether
Seating in the Garden, at the Hall Emmy Noether, or in the conviviality area located along the Parallel Sessions room in Building West
- 12:30 – 14:30 **Lunch Sessions #1: L1a — L1d** (click for programme)
(*in parallel)
L1a: 12:30 – 14:30 **PhD Students Poster Session**
L1b: 12:40 – 13:40 **Round Table #1: Perspectives on Migration and Social Policy**
L1c: 13:20 – 14:20 **Round Table #2: Non Academic Job Market**
L1d: 13:20 – 14:20 **Training Session on STATA**
- 14:30 – 16:00 **Parallel Sessions #2: 2A — 2H** (click for programme)
Buildings South-West & West, 1st and 2nd floor
- 16:00 – 16:30 **Coffee Break**
Garden
- 16:30 – 18:00 **Parallel Sessions #3: 3A — 3H** (click for programme)
Buildings South-West & West, 1st and 2nd floor
- 18:00 – 20:30 **Cocktail Reception**
LUMEN (5 min walk) — 8 avenue des Sciences - 91190 Gif sur-Yvette

[Click and skip to Tuesday, June 3rd](#)

[Click and skip to Wednesday, June 4th](#)

Parallel Sessions 1#: 1A — 1H

Monday, June 2nd: 11:00 - 12:30

1A International Trade (Room 1B10)

Phyloeconomic Trade diversity

Mathieu Crozet, Université Paris-Saclay

A meta-analysis of the determinants of export promotion effectiveness

Fifaliana Henintso Rasolofomanana, Université de la Réunion

Making Trade Policy Innovation Friendly: What Role of Trade Agreements?

Chahir Zaki, University of Orléans

1B Law and Economics (AFED) (Room 1B18)

On the 'Duty to Monitor the Autonomous Vehicle (AV)'

Nanxi Li, Université Paris Nanterre

Does Access Mean Success? Connection to Policy-Makers and Lobbying Success of Political Actors

Rosanne Logeart, PSE

The Private Cost of Legal Uncertainty: Evidence from the Unified Patent Court

David Angenendt, Technical University of Munich

1C Urban and Spatial Economics and Environment (Room 1B26)

Choosing green mobility for commuting: who and where? Exploring the effect of urbanisation on commuting mode choice

Emma Weiss-Blanchard, Le Mans Université

The Spillover Effects of Protected Areas on Local Tax Revenues: A Spatial Study of Municipalities in Western France

David Crommelynck, Université de Bretagne Occidentale

Impact of the first French maritime wind farm off the coast of Saint-Nazaire on the price of land; application of the translogarithmic hedonic price model with spatial autocorrelation and informational asymmetry

Abdelhak Nassiri, Université de Bretagne Occidentale

1D Development Economics 1: Deforestation and Natural Resources (AFEDEV 1) (Room 1B36)

Heroin and deforestation: The impact of U.S. heroin demand on land use in Mexico

Berk Öktem, PSAE

Deforestation, Downwind rainfall, and Economic Loss in Western Africa

Mathilde Degois, ENS Paris-Saclay & AgroParisTech

Does improving governance and transparency in natural resources management reduce public debt in resource-rich developing countries?

Neerbewendé Abdoul Rachid Pafadnam, Université Clermont Auvergne

1E Energy and Environmental Economics (Room 1E14)

Oil shocks and their impact on corporate profitability, productivity, and credit risk: Firm-level evidence over two decades

Frédéric Vinas, Banque de France

The Welfare Implications of Oil Exploration

France d'Agrain, CERNA, Mines Paris-PSL

1F Firms (Room 1E26)

Managerial Skills and Business Creation

Catherine Laffineur, University of Cote d'Azur

Are CEO-Worker Pay Ratios Comparable Across Firms? A Firm Complexity Perspective

Tat-Kei Lai, IESEG School of Management

A Comprehensive View of Firm Resilience: Does it Predict Performance during Setbacks?

Simon Tièche, International Institute for Management Development

1G Experimental Economics 1 (ASFEE) (Room 1O07)

Algo-Rhythm Unplugged: Effects of explaining algorithmic recommendations on music discovery

Mehdi Louafi, Université d'Orléans

Target versus budget reverse auctions: an online experiment using the strategy method

Adrien Coiffard, INRAE

The Impact of Fixed Financial Returns on Investment Behavior

Béatrice Boulu-Reshef, Université d'Orléans

1H Education Economics (Room 2E29)

Selective Higher Education and Students' Wellbeing

Sarah Fleche, Centre d'Economie de la Sorbonne, Université Paris 1 Panthéon-Sorbonne

AI and Human Capital Formation: How Occupational AI Exposure Shapes College Major Selection

David Marguerit, LISER

The long-term effects of grade retention: Empirical analysis on French data

Léonard Moulin, INED

[Back to Programme: Monday, June 2nd](#)

Lunch Sessions 1#: L1a — L1d

Monday, June 2nd: 12:30 - 14:30*

*Please note that lunch sessions start at different times.

L1a - 12:30 – 14:30: PhD Students Poster Session (*Building North — Hall Emmy Noether*)

Fed Forward Guidance and Inflation Uncertainty: The Role of Asymmetric Tail Risk
Ameerah Alsumluq, University of Innsbruck

Political Competition with Partisan Identification
Eve Ansari, Université Paris Panthéon Assas

Balancing the Books: Immigration and local finances in France
Nur Bilge, Université de Lille

Contracts-for-Difference and Nuclear Flexibility: A Path to Complementing Renewables
Ange Blanchard, Chaire Economie du Climat & Université Paris-Saclay

The Death of Distance: Mobile Internet and Political Trust in Africa
Rédha Chaba, Université Paris Panthéon Assas

Job Matching and Affirmative Action: The Impact of Transfer Policies
Cyril Rouault, ENS Paris-Saclay

A Scrooge McDuck Theory of Wealth Dynamics
Valentin Marchal, Sciences Po

L1b - 12:40 – 13:40: Round Table #1: Perspectives on Migration and Social Policy (*Amphi. Alain Aspect*)

Moderator: **Jean-Marc Vittori** (Les Echos).

Panel: **Hippolyte d'Albis** (PSE), **Emmanuelle Auriol** (TSE), **Jean-Christophe Dumont** (OECD).

L1c - 13:20 – 14:20: Round Table #2: Non Academic Job Market (*Amphi. Dorothy Hodgkin*)

Chair: **Thierry Pénard** (University of Rennes).

Panel: **Dorothee Rouzet** (DG Trésor), **Nicolas Lluch** (Autorité de la Concurrence), **Maxime Bouter** (Deloitte), **Nicolas Dumas**, (ACPR, Banque de France).

L1d - 13:20 – 14:20: Training Session on STATA (*Room 1B36*)

Organized by **Timberlake**, official distributor of the **STATA** software
Hosted by **Hamza Bennani** (University of Nantes).

[Back to Programme: Monday, June 2nd](#)

Parallel Sessions 2#: 2A — 2H

Monday, June 2nd: 14:30 - 16:00

2A International Trade and Environment (Room 1B10)

When Disasters Cross Borders: Bilateral Trade Responses to Foreign Climate Disasters

Arouna Zorome, CERDI

Can agricultural trade integration promote international climate cooperation?

Bertille Daran, PSAE & CIRED

Analyzing Heterogeneous Social and Environmental Provisions in Preferential Trade Agreements

Clémence Bois, PSE, CNRS

2B History of Economics or History of Economists (Gide 1) (Room 1B18)

Thomas Schelling on Drugs: Pushing the boundaries

Philippe Fontaine, ENS Paris-Saclay

Economic History and Development Policy: Douglass North's Disillusionment with Free-Market Reforms, 1950s–1990s

Cyril Jung, ENS Paris-Saclay

A Theory of Gary Becker

Jonny Bunning, EHESS

2C Gender Economics (Room 1B26)

Reallocating the Clock: How public services are shaping women's time use in Europe

Romane Frecheville, University of Strasbourg

Couple labour force participation in France: an uneven protection against poverty

Olivier Baguelin, University of Evry Paris-Saclay

Where women can have it all? The public sector and the rise of women in the higher deciles of wages in French overseas departments

Sandhya Apaya, Université de la Réunion

2D Development Economics 2: Education (AFEDEV 2) (Room 1B36)

The more languages the merrier?: Peer effects on language acquisition for migrant students

Andrea Cornejo, PSE & University of Arkansas

The impact of refugees in schools on native and immigrant pupils: Evidence from Switzerland

Siwar Khelifa, University of Neuchâtel

2E Energy Economics 1 (Room 1E14)

Renewable energy, corruption, geopolitical risks and inflation: why is the EU's growth so sluggish? Exploring nonlinearities in light with the energy transition

Iuliana Matei, Université Paris 1 Panthéon-Sorbonne

Tariffs time-dynamics in competitive electricity retail markets with differentiated consumer reactions

Julien Ancel, Université Paris-Saclay

Strategic investment in electricity generation with renewable entrants: The case of French nuclear power

Richard Ruble, EM Lyon

2F Public Finance (Room 1E26)

Real Exchange Rate and External Public Debt in Emerging and Developing Countries

Grégory Donnat, Université Côte d'Azur

The Heterogeneity of the Regional Government Spending Multiplier: the Case of French Regions

Clara Horkay, Université Paris Nanterre

2G Experimental Economics 2 (Room 1O07)

Preferences for market-based allocation mechanisms

Elias Bouacida, Université Paris 8

Is training helpful in boosting the self-confidence (and professional integration) of young people not in employment, education, or training? Results from a randomized experiment

Alexis Parmentier, Université de la Réunion

2H Labor Economics 1 (Room 2E29)

Employment Dynamics and the Diversity of Labor Flows: The Contrasting Roles of Temporary Contracts

Marion Mauchaussée, Université Catholique de Lille

Digitalization, workers' anxiety, and pension savings behavior

Thuc Uyen Nguyen-Thi, LISER

Short-Time Work Dynamics in Business Cycles

Kristina Saveska, Friedrich-Alexander University of Erlangen-Nuremberg

[Back to Programme: Monday, June 2nd](#)

Parallel Sessions #3: 3A — 3H

Monday, June 2nd: 16:30 - 18:00

3A Environmental Economics and Biodiversity (Room 1B10)

Do Preferential Trade Agreements Matter for Biodiversity Conservation?

Estelle Gozlan, PSAE, INRAE

The landscape impacts of the Common Agricultural Policy: a RDD evaluation of Green Payments on Ecological Focus Areas

Valentin Cocco, PSAE, INRAE

Measuring local (bio)diversity with Diversity Measures at Distance

Florence Puech, Université Paris-Saclay & PSAE

3B History of Economic Thought (Gide 2) (Room 1B18)

François Perroux's corporatist price control theory: the roots of a structuring critique of neoclassical economics

Basile Clerc, Université Paris Nanterre

From Science to Politics and Back to Science: Subjective Preferences in the History of Economics

Sina Badiçi, University of Strasbourg

Duncan Black and Group Decision-making: From Early Priority Dispute to Late Recognition

Herrade Igersheim, University of Strasbourg

3C Knowledge and Business (Room 1B26)

Foreign technological entry, intellectual property rights, and technology diffusion: Evidence from patent filings at the USPTO

Charles de Grazia, EMLV

Virtual Business Networks and Knowledge Diffusion: Experimental Evidence from Liberia

Anubhav Agarwal, PSE

How WEIRD? Experimental impacts of an empowerment training and cultural agency models on female microfinance members in Vietnam

Claire Stein, University of Groningen

3D Development Economics 3: Aid (AFEDEV 3) (Room 1B36)

Chair: Jean-Baptiste Guiffard, CREST & Telecom Paris

Climate aid and North-South relationship

Thi Kim Cuong Pham, Université Paris Nanterre

Strategic competition and donor interests: An econometric approach to the market for the allocation of climate development aid for renewable energy projects

Cristina Penasco, Banque de France

3E Energy Economics 2 (AEE) (Room 1E14)

Intermittency and uncertainty in wind and solar energy: Impacts on the French electricity market

Kangni Maurice Ekoue, Université Grenoble Alpes

Electric mobility investment in developing countries: emerging regional patterns from cross-country analyses

Yannick Perez, Centrale Supélec

3F Macroeconomic Policy (Room 1E26)

America First? The Macroeconomic Implications of Punitive Tariffs

Marius Jäger, Deutsche Bundesbank

Financial Shocks, Macroeconomic Regimes and Investment Tangibility: Evidence from State Dependence Local Projection

Ameerah Alsumluq, University of Innsbruck

When Preferences Cap Consumption: A Scrooge McDuck Theory of Wealth Dynamics

Valentin Marchal, Sciences Po

3G Decision Theory (Room 1O07)

On Multiple Time-Varying Discount Rates with Recursive Time-Dependent Orders

Thai Ha-Huy, University of Evry Paris-Saclay

Ambiguity preferences and likelihood insensitivity for asymmetric events

Thibaut Kpegli Yao, Université de Pau et des Pays de l'Adour

3H Labor Economics 2 (Room 2E29)

Training for Jobseekers, A Strategic Response to Labour Shortages? Evidence from France

Héloïse Burlat, University of Strasbourg & Ghent University

Support policy shifts and their impacts on RSA beneficiaries' outcomes

Aurélien Boyer, Université Paris 1 Panthéon-Sorbonne

[Back to Programme: Monday, June 2nd](#)

Programme: Tuesday, June 3rd

- 9:00 – 9:30 **Welcome Coffee**
Garden
- 09:30 – 11:00 **Parallel Sessions #4: 4A — 4H** (click for programme)
Buildings South & West, 1st and 2nd floor
- 11:00 – 11:30 **Coffee Break**
Garden
- 11:30 – 12:30 **AFSE Presidential Lecture**
Introduction: **Stefano Bosi** (University of Evry Paris-Saclay, CEPS)

Anne Perrot (Inspection Générale des Finances)
Public Policy Towards the Digital Sector and the Media
Amphi. Alain Aspect
- 12:30 – 13:30 **AFSE General Meetings & Awards**
Best Thesis Award: tba
Amphi. Alain Aspect
- 13:30 – 15:00 **Lunch Break***
Building North — Hall Emmy Noether
Seating in the garden, at the Hall Emmy Noether or by the parallel sessions.
- 13:30 – 15:00 **Lunch Sessions #2: L2a — L2c** (click for programme)
(*in parallel)
L2a: 13:30 – 15:00 **PhD Students Poster Session**
L2b: 13:40 – 14:40 **Round Table #3: Turbulences: Populism, Identity Politics, and Polarization**
L2c: 14:00 – 15:00 **Round Table #4: The international Climate Negotiations and the Promises of Climate Aid to Developing Countries**
- 15:00 – 16:30 **Parallel Sessions #5: 5A — 5H** (click for programme)
Buildings South & West, 1st and 2nd floor
- 16:30 – 17:00 **Coffee Break**
Garden
- 17:00 – 18:30 **Parallel Sessions #6: 6A — 6H** (click for programme)
Buildings South & West, 1st and 2nd floor
- 19:00 – 22:30 **AFSE Banquet**
Château de Breteuil

[Click and go back to Monday, June 2nd](#)

[Click and skip or to Wednesday, June 4th](#)

Parallel Sessions 4#: 4A — 4H

Tuesday, June 3rd: 9:30 - 11:00

4A Environmental Economics: Policies (Room 1B10)

Beyond Uniformity: Measuring the Stringency of Climate Policy Mixes Across Sectors and Countries

Coline Metta-Versmessen, Chaire Economie du Climat & Université Paris-Dauphine - PSL

Adapting to climate change with (in)complete land property rights: Evidence from the Greece land registry reform

François Bareille, INRAE

Incidence of means-tested subsidies to housing retrofit: Evidence from France

Etienne Fize, CREST

4B Economic History 1 (AFHé) (Room 1B18)

Freehold Land, Resistance To Authoritarianism and Support for Democracy

Adrien Montalbo, IESEG School of Management

An illusory feeling of stability: bank failures in France in the 1920s

Demilly David, Banque de France

4C Health Economics 1 (CES 1) (Room 1B26)

Chair: Anne Laure Samson, Université Paris Panthéon Assas

Does Virtual Integration Improve Care Coordination? Assessing the Impact of the 2016 Public Hospitals Reform in France

Loic Guerin, EHESP

Impact of retirement age on long-term frailty in Europe

Thomas Blavet, Université Paris 1 Panthéon-Sorbonne

Investigating French citizens' preferences for autonomy loss prevention programs over the life cycle

Aimée Kingsada, Université Paris Cité

4D Development Economics 4: Specialization and convergence (Room 1B36)

Comparative Advantage, Endowment Structure and Regional Specialization in China

Wenliang Li, Université Paris Dauphine - PSL

Deep Trade Agreements and Trade in Value-Added: Does Heterogeneity Matter?

Isabelle Rabaud, Université d'Orléans

Structural Change and Regional Income Convergence: Evidence from China

Lise Patureau, Université Paris Dauphine - PSL

4E Sustainable Economics (Room 1E14)

Carbon emission cycles in the U.S.: Greening through browning?

Javier Ferri, Universitat de València

Impact of natural disasters: average effects hide heterogeneity across growth regimes and time horizons

Edem Egnikpo, Aix-Marseille School of Economics

Stochastic Debt Sustainability Analysis for France: A VAR Approach

Frédérique Bec, CY Cergy Paris Université

4F Mathematical Economics (Room 1E26)

Type-Departure Free Equilibrium in Signaling Games

Morgan Patty, ENS Paris-Saclay

(Non-Monotonic) Effects of Productivity and Credit Constraints on Equilibrium Aggregate Production in General Equilibrium Models with Heterogeneous Producers

Ngoc Sang Pham, EM Normandie Business School

4G FASES (Room 1O07)

Chair: Catherine Baumont, Université de Bourgogne

Fire bikes to the rescue! Bike-sharing and public transport substitution

Isac Olive, NEOMA Business School

Spatial Interactions of Consumption, Presence, and Mobility: Evidence from Mobile Phone and Transaction Data

Chloe Breton, Telecom Paris

Heterogeneity in the productivity of French construction firms: A multilevel analysis

Abdoulaye Kané, Université Paris Nanterre

4H Climate change and regulation (INFER 1) (Room 2E29)

Bridging the Gap: Estimating Scope 3 Emissions at company's Level

Matilda Baret, Université d'Orléans

Market reaction of physical climate risks within the European Insurance market

Sarah Pouey, Université d'Orléans

Shadow banking and consistency of a carbon-intensive Counter-Cyclical Capital Buffers regulation

Florina Cristina Badarau, Bordeaux School of Economics

[Back to Programme: Tuesday, June 3rd](#)

Lunch Sessions 2#: L2a — L2c

Tuesday, June 3rd: 13:30 - 15:00*

*Please note that lunch sessions start at different times.

L2a - 13:30 – 15:00: PhD Students Poster Session (Building North — Hall Emmy Noether)

Fed Forward Guidance and Inflation Uncertainty: The Role of Asymmetric Tail Risk
Ameerah Alsumluq, University of Innsbruck

Political Competition with Partisan Identification
Eve Ansari, Université Paris Panthéon Assas

Balancing the Books: Immigration and local finances in France
Nur Bilge, Université de Lille

Contracts-for-Difference and Nuclear Flexibility: A Path to Complementing Renewables
Ange Blanchard, Chaire Economie du Climat & Université Paris-Saclay

The Death of Distance: Mobile Internet and Political Trust in Africa
Rédha Chaba, Université Paris Panthéon Assas

Job Matching and Affirmative Action: The Impact of Transfer Policies
Cyril Rouault, ENS Paris-Saclay

A Scrooge McDuck Theory of Wealth Dynamics
Valentin Marchal, Sciences Po

L2b - 13:40 – 14:40: Round Table #3: Turbulences: Populism, Identity Politics, and Polarization (Amphi. Dorothy Hodgkin)

Organized by **CEPR** — Chair: **Dimitrios Xefteris** (University of Cyprus).

Panel: **Pierre Boyer** (Ecole Polytechnique), **Clémence Tricaud** (UCLA), **Stéphane Wolton** (LSE).

L2c - 14:00 – 15:00: Round Table #4: The international Climate Negotiations and the Promises of Climate Aid to Developing Countries (Amphi. Alain Aspect)

Organized by **PSAE** — Moderator: **Marie Bellan** (Les Echos).

Panel: **François Bourguignon** (PSE), **Christophe Cassen** (CIRED) and **Lucille Neumann Noel** (Paris-Nanterre University).

[Back to Programme: Tuesday, June 3rd](#)

Parallel Sessions #5: 5A — 5H

Tuesday, June 3rd: 15:00 - 16:30

5A Environmental Economics: Pollution (Room 1B10)

The relationship between air pollution exposure and income: empirical findings from France at the municipality level from 2009 to 2019

Audrey Glass, Université de Lille

The Unequal Impact of Air Pollution on Human Capital: Evidence from France

Camille Salesse, Center for Environmental Economics in Montpellier

Go hard or go home? The limited impacts of "soft" informational policies on pesticide usage in France

Marc Yeterian, Université Paris Dauphine - PSL

5B Economic History 2 (AFC1) (Room 1B18)

Chair: Charlotte Le Chapelain

Women and the Great War: From Shadows to Memory. The Genesis of a Database on 'Women Who Died for France' (1914-1918)

Magali Jaoul-Grammare, University of Strasbourg

Entrepreneures dans l'industrie de l'imprimerie. L'entreprise Berger-Levrault au XIX^e siècle

Charlotte Le Chapelain, Université Lyon III

Suzanne Voilquin (1801-1876) : une femme entreprenante au sein du mouvement saint-simonien

Ragip Ege, University of Strasbourg

5C Health Economics 2 (CES 2) (Room 1B26)

Chair: Florence Jusot

Le fardeau des risques psychosociaux sur la santé mentale : Quel impact sur les professionnels de santé hospitaliers ?

Estelle Augé, IRDES

Medium-Term Effects of the Covid-19 Pandemic on Healthcare Utilisation in Europe:

Behaviours or Characteristics Changes?

Louis Arnault, Université Paris Dauphine - PSL

Money to come? The Impact of zoning policy combine with financial Incentives on French GP's practice location in underserved areas

Julien Mousquès, IRDES

5D Development Economics 5: Public Systems (Room 1B36)

Public Private Partnership Models in Social Health Insurance Schemes - Evidence from a Pioneering Program in India

Titir Bhattacharya, University Of Warwick

Examining the Role of Social Protection System on Migration Intentions: Causal Empirical Evidence from Tunisia

Fares Ben Youssef, Université de Tunis

Do you feel French after naturalization?

Marine de Talancé, Université Gustave Eiffel

5E Industrial Organization: Theory (Room 1E14)

Welfare Implications of Supplier Encroachment With Consumer Shopping Costs

Stéphane Caprice, Université Toulouse I

Green, Green or Neutral? Signaling Environmental Quality under Incomplete Information

Mahaut De Villeneuve Bargemon, CY Cergy Paris Université

Evaluating second-hand EVs subsidies: The role of vertical and horizontal preferences

Maria-Eugenia Sanin, University of Evry Paris-Saclay

5F Macroeconomics 1 (Room 1E26)

Which idiosyncratic risk matters for business cycles?

Antoine Frech, University of Evry Paris-Saclay

When does Monetary Policy Matter? The Life-Cycle of Policy Expectations

Mathias Lé, Banque de France

The effects of fiscal shocks on financial stability in the euro area

Manlan N'Goran, Université Grenoble Alpes

5G Territorial Dynamics, Public Policies and Economic Inequalities (ASRDLF 1) (Room 1O07)

Chair: Sébastien Bourdin

Spatial analysis of socio-economic inequalities: a territorial approach

Rojas'sh Lasney Mouckendou Mihindou, Université de Bourgogne

Public investment and tourism development: An analysis of European regions

Yvan Tegui, Université de Perpignan

Agricultural Support Policy and Rural Employment Dynamics: Direct Impacts and Sectoral and Geographic Spillover Effects

Yrabo Dabou, INRAE

5H Environmentalist values, migrations and labor market (INFER 2) (Room 2E29)

Chair: Camélia Turcu

AI Diffusion, Disasters, Environmental and Social Change

Donatella Gatti, Université Sorbonne Paris Nord

Climate Change and Migration Dynamics in Arab Countries

Yossri Dribek, Sciences Po

The Impact of Subsidies on Training: Evidence from the United States

Guillaume Morlet, ETH Zurich

[Back to Programme: Tuesday, June 3rd](#)

Parallel Sessions #6: 6A — 6H

Tuesday, June 3rd: 17:00 - 18:30

6A Environmental Economics (Room 1B10)

Public Support of Environmental Taxes on Transportation Choices - A Laboratory Experiment
Tanguy Richard, IFPEN

Willingness to pay for the environment: the role of social status and of proactive attitude
Martin Cimetiere, Université d'Orléans

Analyzing the economic and environmental relevance of green corridors for the decarbonization of road freight transport in France
Lucie Letrouit, Université Gustave Eiffel

6B Economic History 3 (AFC2) (Room 1B18)

Chair: Magali Jaoul-Grammare

Demographic and Labor Market Effects of a Localized Shock to Industrial Employment
Marcel Voegelé, TU Dortmund University

Gendered Study Choice and Prestige of Professions: France in the Long 20th Century
Claude Diebolt, University of Strasbourg

6C Health Economics 3 (CES 3) (Room 1B26)

Chair: Thomas Barnay

The Socioeconomic Determinants of Pandemics: A Spatial Methodological Approach with Evidence from COVID-19 in Nice
Rania Belgaied, Université Côte d'Azur

Use and perception of a health data sharing platform: The case of Mon Espace Santé in France
Gabin Morillon, Université de Montpellier

I care, you clean? Gendered effects of informal care on couple housework and leisure time
Marie Blaise, LISER

6D Development Economics 6: Institutions (Room 1B36)

Fraud Detection Under Limited State Capacity: Experimental Evidence From Senegal
Mattea Stein, University of Naples Federico II

The Trickster's Legacy - The Folklore Roots of Corruption
Jean-Baptiste Marigo, University of Strasbourg

The Death of Distance: Mobile Internet and Political Trust in Africa
Rédha Chaba, Université Paris Panthéon Assas

6E Industrial Organization: Applications (Room 1E14)

Greening the car fleet: demand determinants, policy impacts & introduction of new products
Ariane Bousquet, INRAE

The impact of territorial continuity on air passenger traffic volumes in overseas territories: The Reunion Island case study
Sarodja Naminzo, Université de Montpellier

Firms' integration strategies in the agri-food sector
Angela Chepte, INRAE

6F Macroeconomics 2 (Room 1E26)

Fiscal policies are not all alike: composition effects, regime switching and uncertainty
Jérôme Creel, OFCE

Can Sentiment Predict the Depth of a Recession? Insights from IMF Reports
Mathilde Dufouleur, University of Evry Paris-Saclay

The Macro-Financial Effects of Financial Integration in a Monetary Union
Margarita Rubio, University of Nottingham

6G Economic Transformations and Territorial Networks (ASRDLF 2) (Room 1O07)

Chair: Sébastien Bourdin

Breaking free from the regional carbon trap: Analysing the persistence of CO2 emissions in European regions
Sébastien Bourdin, EM Normandie Business School

La Criticité des Réseaux d'Innovation : une démarche originale
Guillaume Poujade, Université de Tours

6H Social Mobility (Room 2E29)

Five Decades of Changes in Intergenerational Educational Mobility: the French Case
Valentine Schmitz Geldhof, LITL

Intergenerational mobility among children of immigrants and natives: The role of residential segregation
Louis Sirugue, London School of Economics

The long shadow of childhood economic disadvantage: post compulsory education and early labour market trajectories and outcomes
Oliver Anderson, UCL

[Back to Programme: Tuesday, June 3rd](#)

Programme: Wednesday, June 4th

- 9:00 – 9:30 **Welcome Coffee**
Garden
- 09:30 – 11:00 **Parallel Sessions #7: 7A — 7H** (click for programme)
Buildings South & West, 1st and 2nd floor
- 11:00 – 11:30 **Coffee Break**
Garden
- 11:30 – 13:00 **Parallel Sessions #8: 8A — 8H** (click for programme)
Buildings South-West & West, 1st and 2nd floor
- 13:00 – 15:00 **Lunch Break***
Building North — Hall Emmy Noether
Seating in the Garden, at the Hall Emmy Noether, or in the conviviality area located along the Parallel Sessions room in Building West
- 13:05 – 14:50 **Lunch Sessions #3: L3a — L3d** (click for programme)
(*in parallel)
L3a: 13:05 – 13:45 **Round Table #5: Women in Economics (WinE) Policy**
L3b: 13:05 – 13:50 **Econometric Games**
L3c: 13:50 – 14:50 **Round Table #6: Sexual and Gender-Based Violence in Academia: Assessment and Perspectives**
L3d: 13:50 – 14:50 **Training Session on STATA**
- 15:00 – 16:00 **Jean-Jacques Laffont Lecture**
Introduction: **Michael Greinecker** (ENS Paris-Saclay, CEPS)

Alexander Teytelboym (University of Oxford)
Duality in Market Design
Amphi. Alain Aspect
- 16:00 – 16:30 **Coffee Break**
Garden
- 16:30 – 18:00 **Parallel Sessions #9: 9A — 9F** (click for programme)
Buildings South-West & West, 1st and 2nd floor
- 18:00 – 20:30 **Farewell Reception***
Garden
- 18:15 – 19:45 **Theater Play — Scène de Recherche: *Nos Préférences***
(*in parallel) *Garden*

[Click and go back to Monday, June 2nd](#)

[Click and skip back to Tuesday, June 3rd](#)

Parallel Sessions 7#: 7A — 7H

Wednesday, June 4th: 9:30 - 11:00

7A FAERE 1 (1B10)

Chair: Hubert Stahn

Weathering the Storm: Analyzing the Impact of Climatic Events on International Migration Patterns

Thais Nunez Rocha, Université d'Orléans

Consumption, proximity, and health: modeling environmental inequality with information failures

Jun Hu, Université de Bourgogne

Green Growth or Degrowth? Ecological transition under limits to inputs substitutability

Guillaume Delafosse, ENS Paris-Saclay

7B Urban and Spatial Economics 1 (Room 1B18)

Flood and Residential Mobility in France

Katrin Millock, PSE, CNRS

Geography and City Size between Past and Present

Federico Trionfetti, Aix-Marseille School of Economics, CNRS

Pandemic-induced changes on residential prices in major French cities

Martin Regnaud, CESAER

7C Health Economics 4 (Room 1B26)

School Canteens or Food Taxes? A Comparative Analysis of Public Health and Climate Outcomes Aurore Foudrinier, Université Gustave Eiffel & PSAE

Disability-free retirement expectancies

Ulysse Lojkine, Axpo & CRIS

Automation in the Workplace: Implications for Workers' Health

Pauline Leveneur, CREST

7D Development Economics 7(Room 1B36)

Child Fostering and Nutrition in South Africa

Elsa Gautrain, University of Fribourg

Seasonal storage, market participation and food security of farm households in Madagascar highlands

Céline Bignebat, INRAE

Currency crises and health conditions in the short and long run
Albin Salmon, Université Paris Nanterre & Banque de France

7E Market Design (Room 1E14)

Duality and Information Design
Michael Greinecker, ENS Paris-Saclay

Extreme Points in Multi-Dimensional Screening
Patrick Lahr, ENS Paris-Saclay

Job Matching and Affirmative Action: The Impact of Transfer Policies
Cyril Rouault, ENS Paris-Saclay

7F GDRE Monnaie, Banque, Finance : Money and Climate Change (Room 1E26)

Warning words in a warming world: Central bank communication and climate change
Jérôme Deyris, Sciences Po

Going green: Will the r-star shine brighter?
Marie Jézéquel-Royer, Université d'Orléans & Banque de France

Vulnerability to climate change and funding squeeze in Sub-Saharan Africa
Amétépé Egbétoké, Université de Picardie Jules Verne

7G Digital Economics 1 (AFREN) (Room 1O07)

Chair: Thierry Pénard

Information Networks and Market Integration: Evidence from Napoleonic Internet and Wheat Market in 19th Century France
Martin Delville, Télécom Paris, CREST

Is Competition Only One Click Away? The Digital Markets Act Impact on Google Maps
Louis Pape, Télécom Paris, CREST

Threats, Bans, and Competition: Ripple Effects in the Global Smartphone Market
Ambre Nicolle, University of Munich

7H Population Economics (Room 2E29)

Theoretical considerations on the retirement consumption puzzle and the optimal age of retirement
Nicolas Drouhin, Université de Caen, CREM

Intergenerational Altruism and Transfers of Time and Money: A Life Cycle Perspective
Jamie Hentall Maccuish, HEC Paris

[Back to Programme: Wednesday, June 4th](#)

Parallel Sessions #8: 8A — 8H

Wednesday, June 4th: 11:30 - 13:00

8A FAERE 2 (Room 1B10)

Chair: Hubert Stahn

Strategic Effects of Carbon Pricing, Free Allocation, and Border Adjustments on Investment, Emissions, and Competitiveness

Arthur Willemaers, Université de Pau et des Pays de l'Adour

Recycling or downcycling? A partial equilibrium analysis

Lise Peragin, Université Paris Dauphine - PSL

Cooperation of cities and national governments on climate change

Basak Bayramoglu, PSAE, INRAE

8B Urban and Spatial Economics 2 (Room 1B18)

Rental Market Tightness in Ile-de-France : Empirical evidence from platform data

Martin Regnaud, CESAER

Does rent control increase rental returns? The case of the metropolitan housing market of Lille, France

Guillaume Toussaint, Université Paris Dauphine - PSL

Unveiling technological combinations: novelty, specialization and trajectory at the regional scope

Felipe Starosta De Waldemar, Université Paris-Saclay

8C Health Economics 5 (Room 1B26)

Managing Infectious Diseases in Decentralized Federations: an Optimal Control Approach

François Arès, University of Laval

Is urban wastewater treatment effective in India? Evidence from water quality and infant mortality

Claire Lepault, CIREN

Revisiting the Causal Impact of Response Time on Health Outcomes in Emergency Care: a Non-Parametric Estimation Using Air Temperature as an IV

Thomas Pelloquin, EHESP & PSE

8D Climate Change and Agriculture (Room 1B36)

Agricultural dynamics and structural transformation: can they withstand weather extremes?

Natalia Zugravu-Soilita, Université de Versailles Saint-Quentin-en-Yvelines

Cost of Inaction: The Economic and Environmental Implications of *Solenopsis invicta* Invasion in the European Union
Jean-Marc Akole, INRAE

8E Political Economy 1 (Room 1E14)

Competences and Communication in Electoral Competition
Alexandre Arnout, Aix-Marseille School of Economics

Political Competition with Partisan Identification
Alberto Grillo, Université Paris Panthéon Assas

Strategic Voting When Winning Is Not All
Dimitrios Xefteris, University of Cyprus

8F Bank Economics (Room 1E26)

International trade and cross border banking: a granular approach using bank specialization
Justine Pedrono, Banque de France

Capital requirements, profitability, and sukuk issuance in banking
Kévin Spinassou, Université des Antilles

Women-led firms' access to bank credit
Nicoletta Berardi, Banque de France

8G Digital Economics 2 (AFREN) (Room 1O07)

Chair: Marc Bourreau

From Connection to Coordination: High-Speed Internet and Protests in Africa
Jean-Baptiste Guiffard, CREST & Telecom Paris

Understanding Digital and Non-Digital Addictions: Determinants and Interrelations
Selin Yardimci, Université de Rennes

A Theory of Investment Simplification and an Experiment with AI Large Language Models
Indigo Jones, Université d'Orléans

8H Growth (Room 2E29)

Demographic Winter, Economic Structure and Productivity in Japan
Mathilde Esposito, Aix-Marseille School of Economics

Global Value Chain Participation and Productivity : Sectoral Insights from the Distance to the Technological Frontier
Théophile Ouedraogo, Université de Bourgogne

[Back to Programme: Wednesday, June 4th](#)

Lunch Sessions 3#: L3a — L3d

Wednesday, June 4th: 12:30 - 14:30*

* Please note that lunch sessions start at different times.

L3a - 13:05 – 13:45: Round Table #5: Women in Economics (WinE) Policy Perspectives (*Amphi. Alain Aspect*)

Panel: **Emmanuelle Taugourdeau** (Ecole Polytechnique), **Soledad Zignago** (Banque de France).

L3b - 13:05 – 13:50: Econometric Games (*Room 1B26*)

Chair: **Samuel Ligonnière** (University of Evry Paris-Saclay).

Panel: **Marie Jézéquel-Royer** (University of Orléans), **Yoann Pull** (University of Orléans).

L3c - 13:50 – 14:50: Round Table #2: Sexual and Gender-Based Violence in Academia: Assessment and Perspectives (*Amphi. Alain Aspect*)

Chair: **Camille Hemet** (University Paris 1 Panthéon-Sorbonne).

Panel: **Hélène Périvier** (OFCE – Sciences Po), **Mathieu Arbogast** (CNRS' Gender Equality Unit & HCEFH), **Jean-Noël Senne** (University Paris-Saclay, representative equality & VSS).

L3d - 13:50 – 14:50: Training Session on STATA (*Room 1B36*)

Organized by **Timberlake**, official distributor of the **STATA** software.

Hosted by **Hamza Bennani** (University of Nantes).

[Back to Programme: Wednesday, June 4th](#)

Parallel Sessions #9: 9A — 9F

Wednesday, June 4th: 16:30 - 18:00

9A FAERE 3 (Room 1B10)

Chair: Hubert Stahn

Thank You for Showing: Corporate Disclosures Enhance Environmental Performance

Imen Ghattassi, CEPN & GREDEG

Intrinsic and Extrinsic Motivations in Organic Farming Practices and Farmers' Subjective Well-Being: The Case of French Organic Farmers

Thi Huong Nhai Nguyen, University of Strasbourg

Nash-bargaining model in organic agriculture's adoption: Lab-in-field experiment in Northern Vietnam

Phu Nguyen-Van, Université Paris Nanterre

9B Urban and Spatial Economics 3 (Room 1B18)

The Impact of Telework on Local Consumption: Evidence from Mobile Phone and Transaction Data

Gabrielle Gambuli, Université Gustave Eiffel

Effect of Increased Housing Demand by Non-Residents on the Local Economy: An Analysis Focused on the Corsican Context

Jules Kone Yanogah, Université de Corse

Assessing the impact of public lighting switch-off policies on crime

Chloé Beaudet, PSAE, INRAE

9C Climate Change and Macro-Finance (Room 1B26)

Humanity does not play DICE

Antoine Ronsain, Airbus, Ecole Nationale de l'aviation Civile & TSE

Determinants of International Climate Finance: A Gravity Panel Model Approach

Francisco Serranito, Université Paris Nanterre

Analyzing CBAM's Effects on the Supply Chain: Green Growth or Green Inflation?

Raphaël Semet, University of Evry Paris-Saclay

9D Political Economy 2 (Room 1E14)

National fractures: The withdrawal of public facilities and electoral dynamics
Nur Bilge, Université de Lille

Causes and Extent of Increasing Partisan Segregation in the U.S.-- Evidence from Migration Patterns of 212 Million Voters
Emilie Sartre, Boston University

Rising inequality and the dynamics of welfare-state regimes
Gilles Le Garrec, Sciences Po

9E Business Fluctuations and Cycles (Room 1E26)

The Effects of a Money-financed Fiscal Stimulus in a Small Open Economy with Fiscal Theory of Price Level
Eiji Okano, Nagoya City University

Markups, Cost Shocks, and Consumer's behavior
Lucia Veraldi, Université Paris Dauphine - PSL

Extreme macroeconomic risk, personal expectations and financial decisions: an information experiment on five European countries
Pauline Gandré, Université Paris Nanterre

9F Public Finance and Taxation (Room 2E29)

Radical Uncertainty, Economic Activity and Fiscal Policy
Joël Hellier, Université de Lille & Université de Nantes

Production Regulation Principles and Tax Reforms
Etienne Lehmann, Université Paris Panthéon Assas

The Minimum Wage Increase Effect on Income Inequalities: A Microsimulation Approach for the Case of France
Audin Roger, DREES

[Back to Programme: Wednesday, June 4th](#)